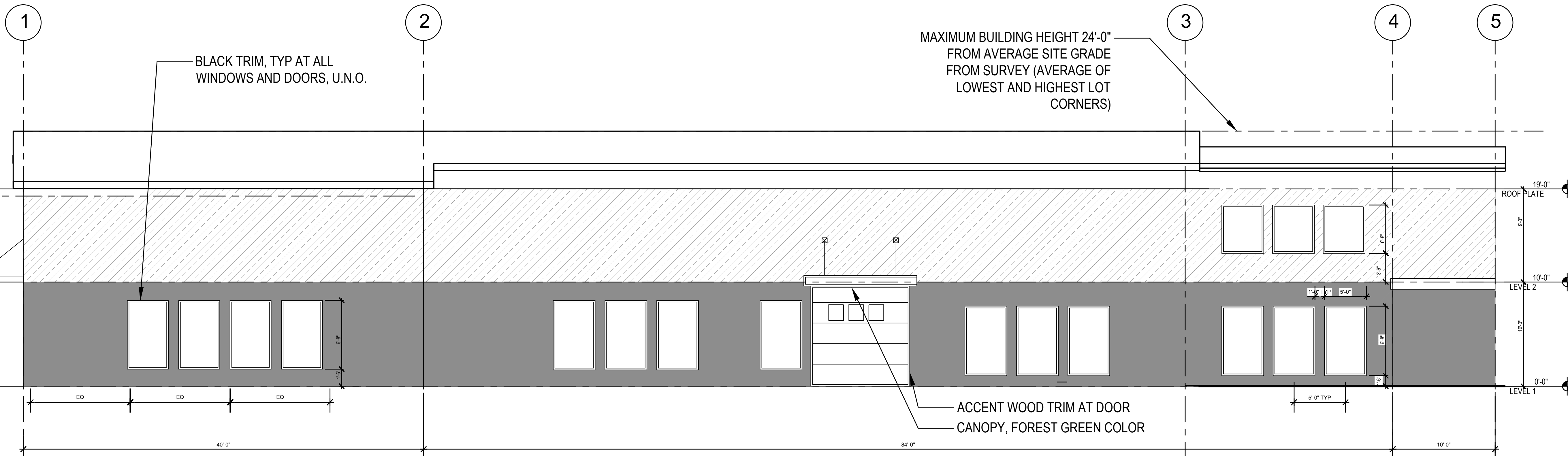


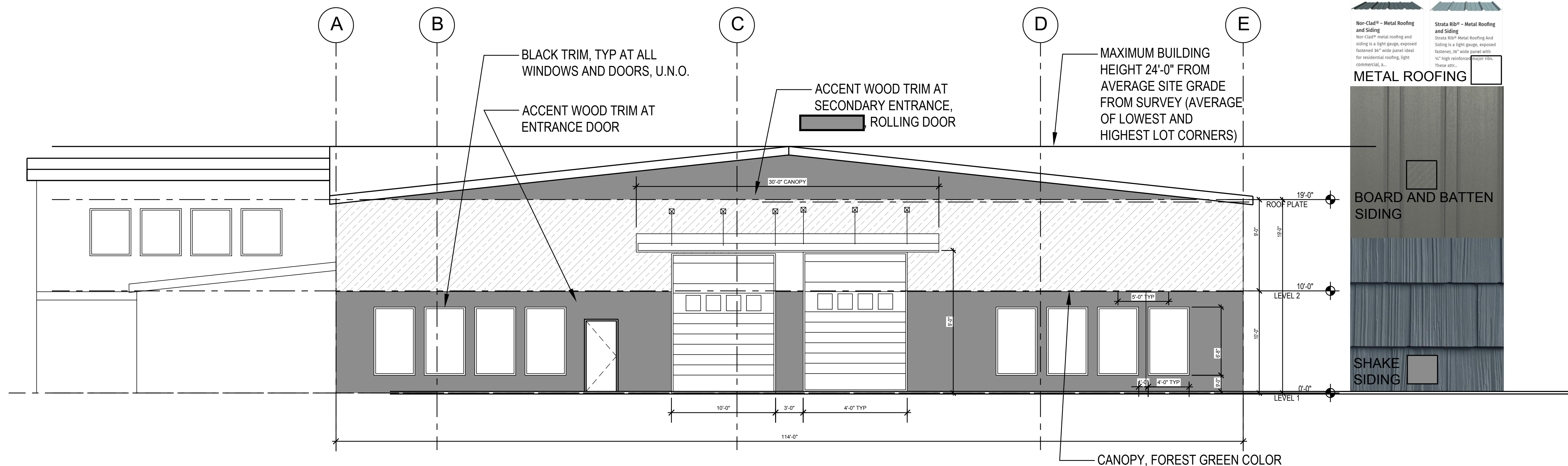
**WHEELER INDUSTRIAL**

BOTTTS MARSH LLC

WHEELER, OR 98642



**EXTERIOR - WEST ELEVATION**  
SCALE: 1/16" = 1'-0"



**EXTERIOR - NORTH ELEVATION**  
SCALE: 1/16" = 1'-0"

**METAL ROOFING**

Non-Clad® - Metal Roofing and Siding  
Non-Clad® metal roofing and siding is a light gauge, exposed fastened 36" wide panel ideal for residential roofing, light commercial, etc.

Strata 80® - Metal Roofing and Siding  
Strata 80® Metal Roofing and Siding is a light gauge, exposed fastened, 36" wide panel with 1/2" high reinforced ribs.

**BOARD AND BATTEN SIDING**

**SHAKE SIDING**

**EXTERIOR ELEVATIONS**  
1/16" = 1'-0"

0 1"  
IF THIS LINE IS NOT 1 INCH LONG THEN THIS DWG IS NOT TO SCALE

**ISSUE DATE:**  
- REVISED LAYOUT 11.30.23

**SHEET NAME:**  
BUILDING ELEVATIONS

**DR.03**