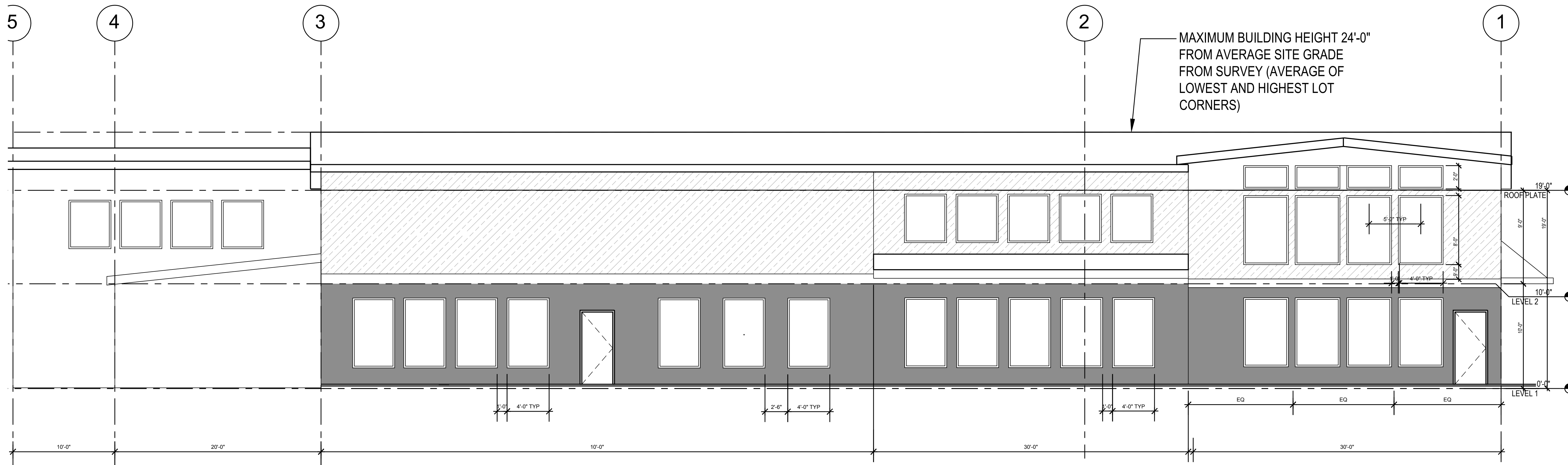


**WHEELER INDUSTRIAL**

BOTTS MARSH LLC

WHEELER, OR 98642



**EXTERIOR - EAST ELEVATION**  
SCALE: 1/16" = 1'-0"

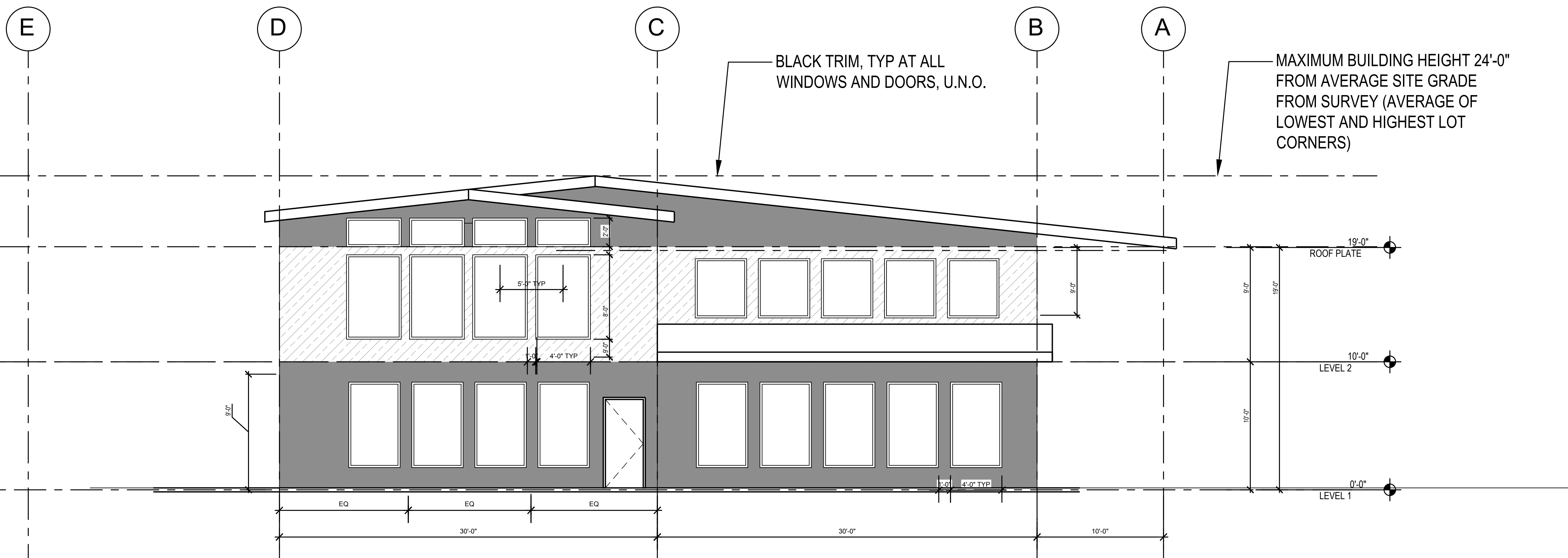
**Nor-Clad® - Metal Roofing and Siding**  
Nor-Clad® metal roofing and siding is a high gauge, exposed fastener 36" wide panel ideal for residential roofing, light commercial, etc.

**Strata Rib® - Metal Roofing and Siding**  
Strata Rib® Metal Roofing And Siding is a high gauge, exposed fastener, 36" wide panel with 1/2" high reinforced metal ribs. These attr...

**METAL ROOFING**

**BOARD AND BATTEN SIDING**

**SHAKE SIDING**



**EXTERIOR - SOUTH ELEVATION**  
SCALE: 1/16" = 1'-0"

**EXTERIOR ELEVATIONS**

1/16" = 1'-0"

0 1"

IF THIS LINE IS NOT 1 INCH LONG THEN THIS DWG IS NOT TO SCALE

**ISSUE DATE:**  
REVISED LAYOUT 11.30.23

**SHEET NAME:**

BUILDING ELEVATIONS

**DR.02**